



# Pee Dee Workforce Investment Area Layoff/Closure Analysis 2005 Through the 1<sup>st</sup> Quarter of 2007



Data source: South Carolina Department of Commerce



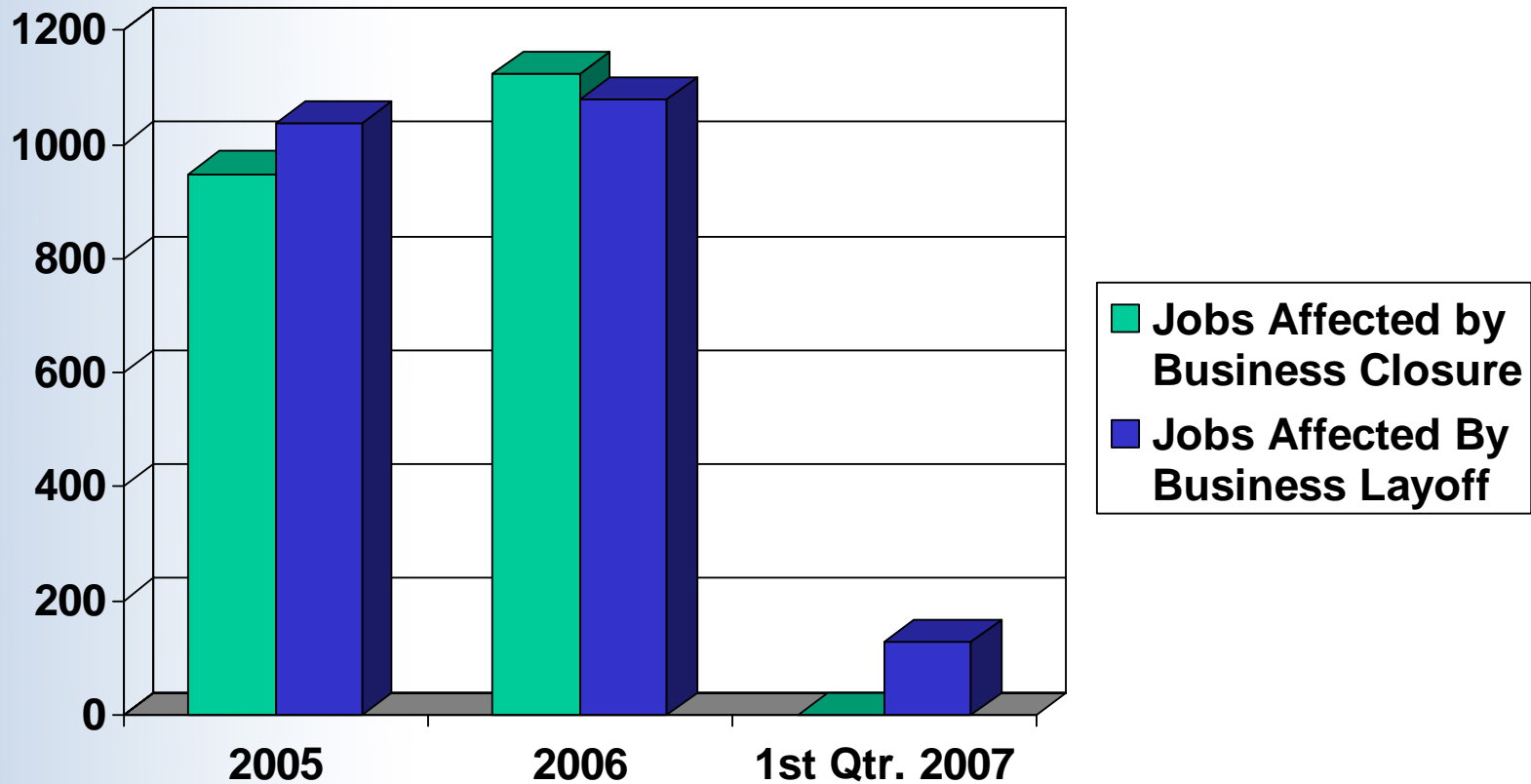
# Pee Dee Workforce Investment Area Closure/Layoff Notifications Summary 2005 – 1<sup>st</sup> Quarter 2007

- 2,071 jobs were affected due to business **closure**.
- 2,242 jobs were affected due to business **layoff**.
- **Textile Manufacturing** reported the greatest number of jobs affected at 1,913 due to layoff/closure.
- **Florence County** reported 1,867 jobs affected – the highest at the county level in the WIA due to layoff/closure.



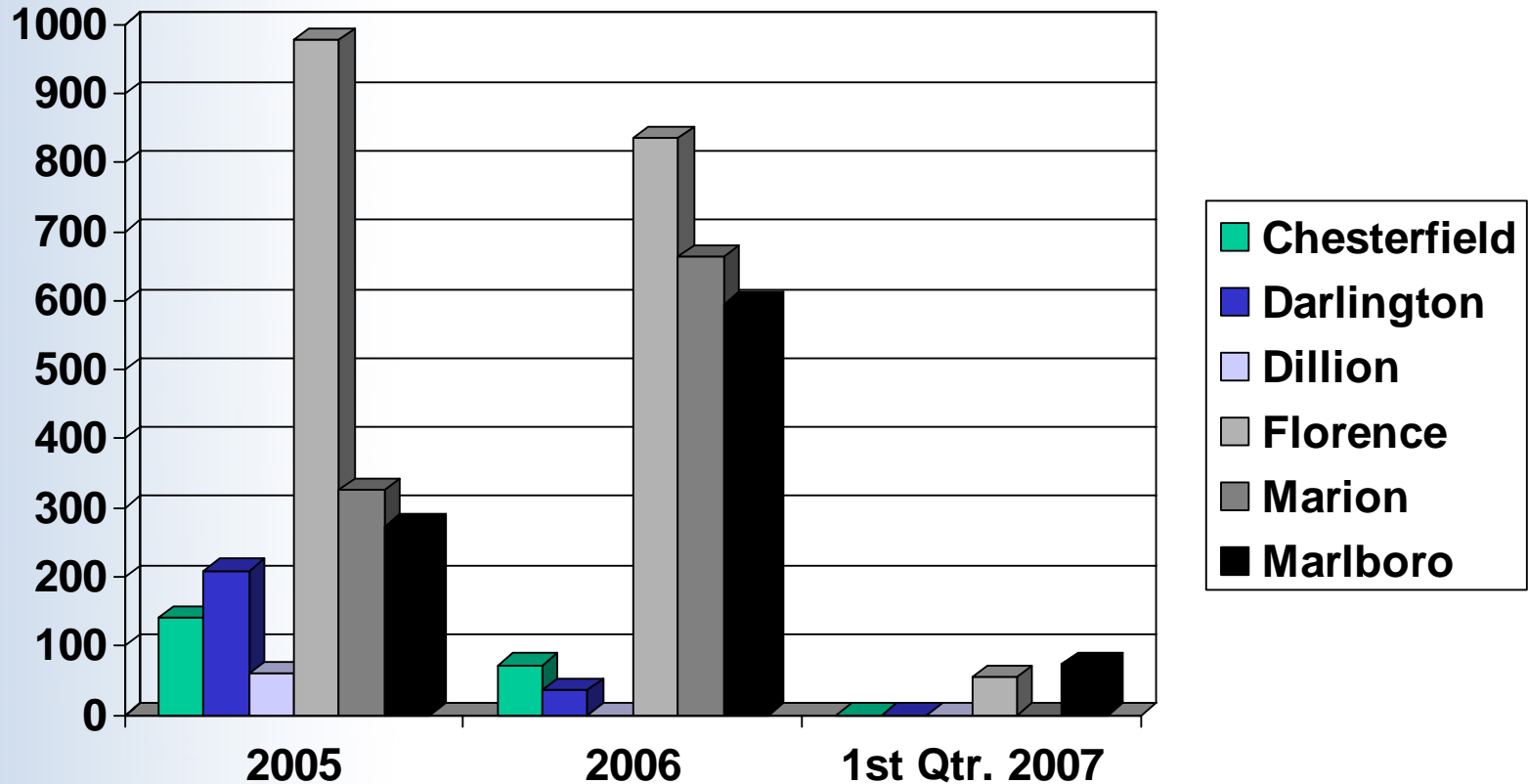


# Pee Dee WIA - Jobs Affected by Business Closure/Layoff Classification by Year



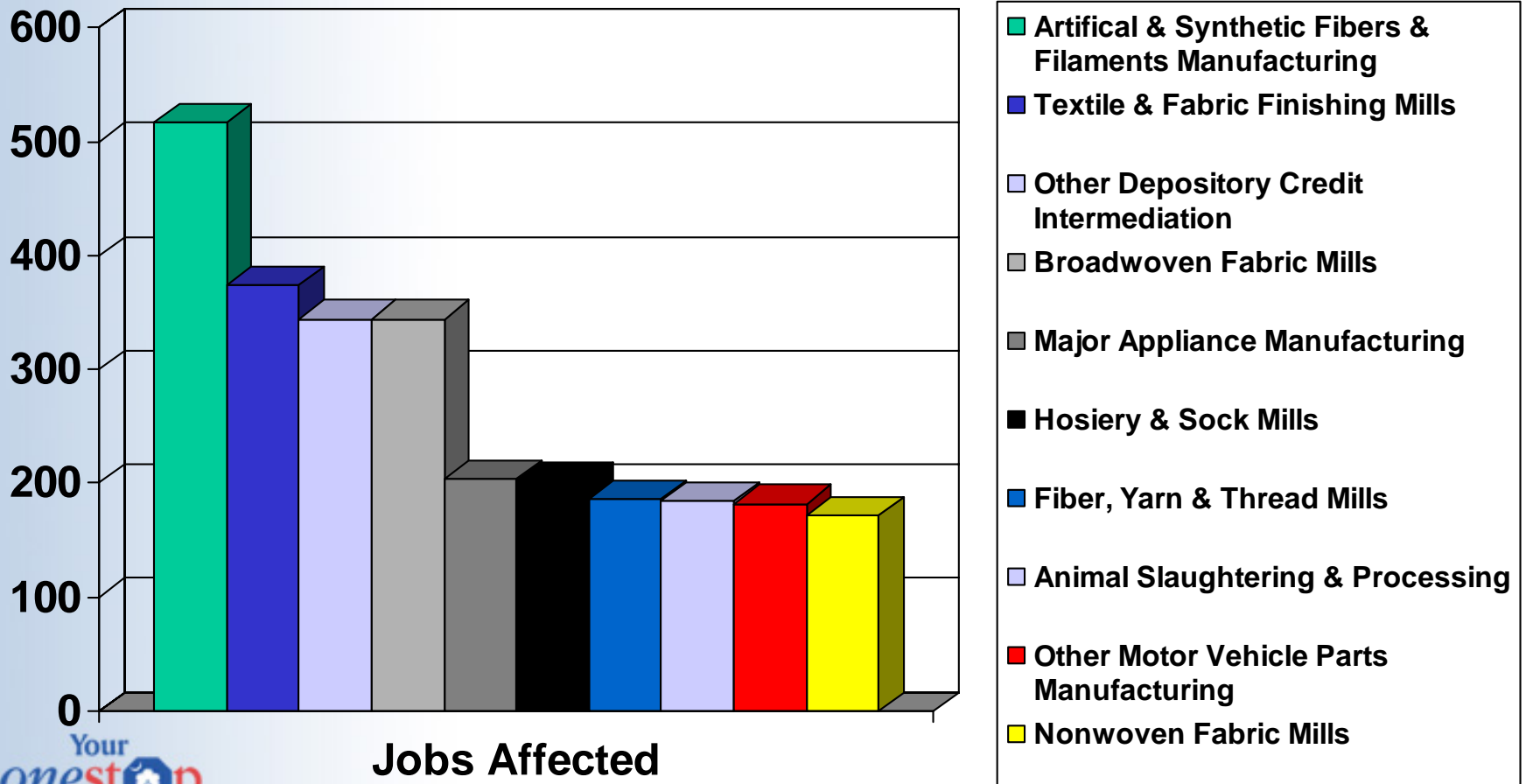


# Pee Dee WIA - Jobs Affected by County Classification by Year





# Pee Dee WIA - Jobs Affected by NAICS Title Classification Years 2005 - 2007 1<sup>st</sup> Qtr.

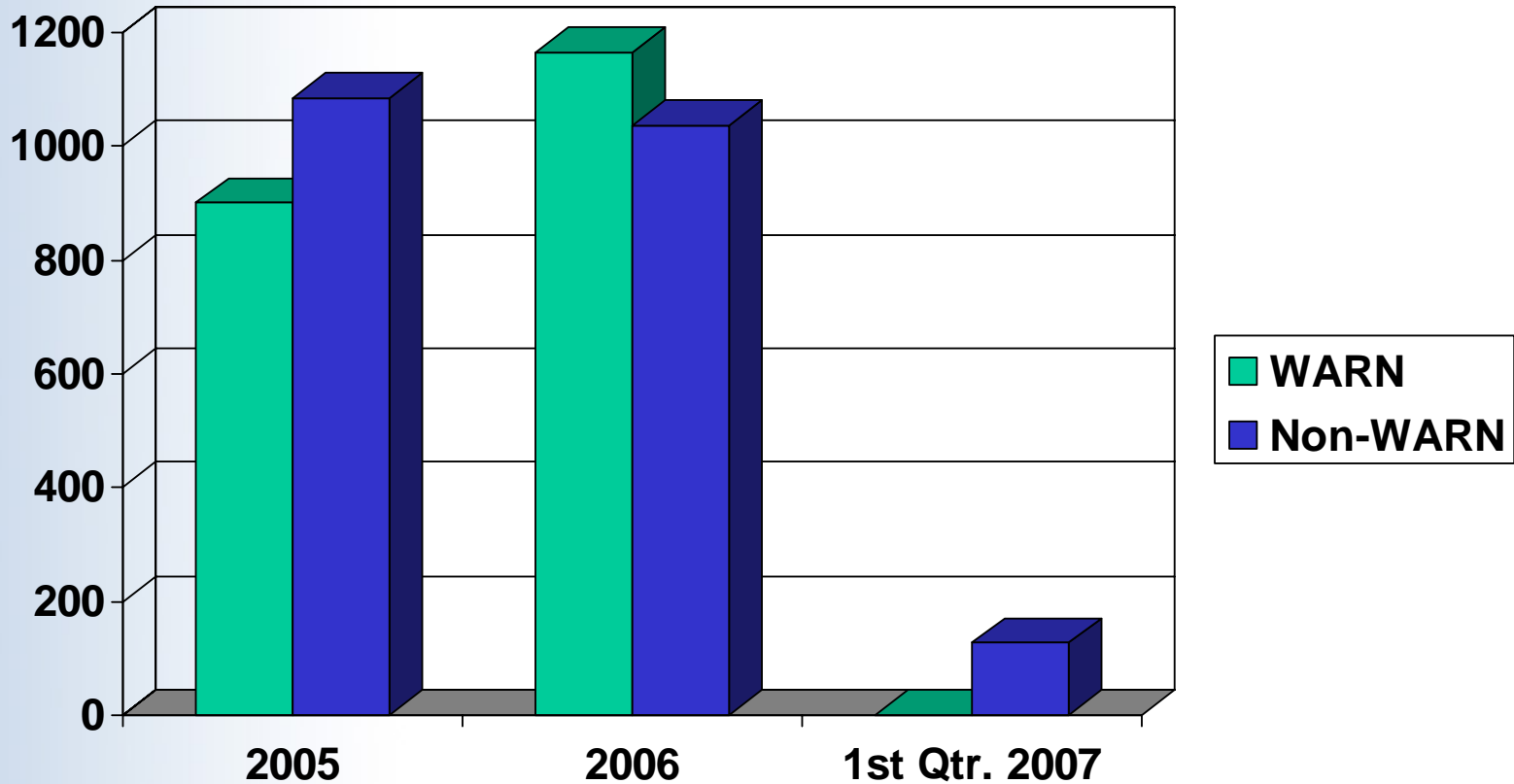


Your  
**onestop**  
to a New Career!

Top 10 Displayed



# Pee Dee WIA - Jobs Affected by WARN Act vs. Non-WARN Act Classification by Year





by S.T. McLaughlin

May, 2007

[Smclaughlin@sces.org](mailto:Smclaughlin@sces.org)

Phone: 803-737-3118