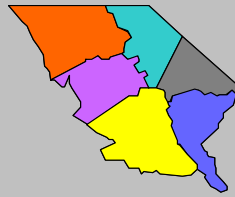


Labor Force Data by  
Workforce Investment Area  
February 2008



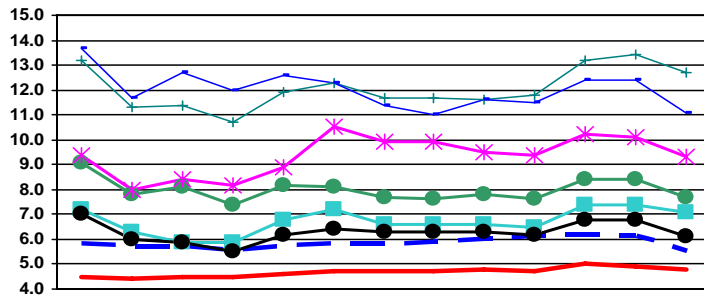
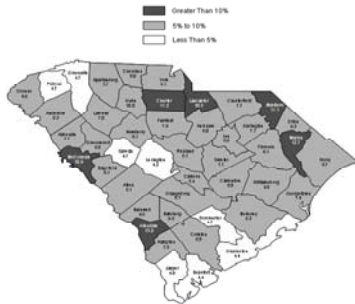
Pee Dee

Labor Force Data - February 2008

|                     | Labor Force | Employment | Unemployment | Unemployment Rate |
|---------------------|-------------|------------|--------------|-------------------|
| Pee Dee WIA         | 150,372     | 138,775    | 11,597       | 7.7               |
| Chesterfield County | 18,007      | 16,627     | 1,380        | 7.7               |
| Darlington County   | 31,831      | 29,579     | 2,252        | 7.1               |
| Dillon County       | 12,976      | 11,763     | 1,213        | 9.3               |
| Florence County     | 63,413      | 59,543     | 3,870        | 6.1               |
| Marion County       | 12,558      | 10,966     | 1,592        | 12.7              |
| Marlboro County     | 11,587      | 10,297     | 1,290        | 11.1              |

Unemployment in the Pee Dee WIA decreased from 8.5% in January to 7.7% in February. Marion County reported the highest rate at 12.7%, while Florence County had the lowest rate at 6.1%. The state's unemployment rate decreased sharply from 6.1% in January to 5.5% in February.

Unemployment Rates  
February 2007 - February 2008



|              | Feb-07 | Mar-07 | Apr-07 | May-07 | Jun-07 | Jul-07 | Aug-07 | Sep-07 | Oct-07 | Nov-07 | Dec-07 | Jan-08 | Feb-08 |
|--------------|--------|--------|--------|--------|--------|--------|--------|--------|--------|--------|--------|--------|--------|
| SC           | 5.8    | 5.7    | 5.7    | 5.6    | 5.7    | 5.8    | 5.8    | 5.9    | 6.0    | 6.1    | 6.2    | 6.1    | 5.5    |
| US           | 4.5    | 4.4    | 4.5    | 4.5    | 4.6    | 4.7    | 4.7    | 4.7    | 4.8    | 4.7    | 5.0    | 4.9    | 4.8    |
| Chesterfield | 9.1    | 7.8    | 8.1    | 7.4    | 8.2    | 8.1    | 7.7    | 7.6    | 7.8    | 7.6    | 8.4    | 8.4    | 7.7    |
| Darlington   | 7.2    | 6.3    | 5.9    | 5.9    | 6.8    | 7.2    | 6.6    | 6.6    | 6.6    | 6.5    | 7.4    | 7.4    | 7.1    |
| Dillon       | 9.4    | 8.0    | 8.4    | 8.2    | 8.9    | 10.5   | 9.9    | 9.9    | 9.5    | 9.4    | 10.2   | 10.1   | 9.3    |
| Florence     | 7.0    | 6.0    | 5.9    | 5.5    | 6.2    | 6.4    | 6.3    | 6.3    | 6.3    | 6.2    | 6.8    | 6.8    | 6.1    |
| Marion       | 13.2   | 11.3   | 11.4   | 10.7   | 11.9   | 12.3   | 11.7   | 11.7   | 11.6   | 11.8   | 13.2   | 13.4   | 12.7   |
| Marlboro     | 13.7   | 11.7   | 12.7   | 12.0   | 12.6   | 12.3   | 11.4   | 11.0   | 11.6   | 11.5   | 12.4   | 12.4   | 11.1   |



Contact: Sam McClary  
803-737-2660  
South Carolina Employment Security Commission  
Labor Market Information/LAUS Unit



**WIA Labor Force Data February 2008**

|                              | LABOR FORCE    |                | UNEMPLOYMENT   |               |               | % OF LABOR FORCE |            |            |            |
|------------------------------|----------------|----------------|----------------|---------------|---------------|------------------|------------|------------|------------|
|                              | Feb 2008       | Jan 2008       | Feb 2007       | Feb 2008      | Jan 2008      | Feb 2007         | Feb 2008   | Jan 2008   | Feb 2007   |
| <b>Catawba WIA</b>           | <b>148,531</b> | <b>150,120</b> | <b>163,098</b> | <b>11,133</b> | <b>12,317</b> | <b>10,673</b>    | <b>7.5</b> | <b>8.2</b> | <b>6.5</b> |
| Chester County               | 15,231         | 15,567         | 30,031         | 1,704         | 1,978         | 1,781            | 11.2       | 12.7       | 11.3       |
| Lancaster County             | 29,276         | 29,751         | 29,669         | 3,065         | 3,414         | 2,825            | 10.5       | 11.5       | 9.4        |
| York County                  | 104,024        | 104,802        | 103,398        | 6,364         | 6,925         | 6,067            | 6.1        | 6.6        | 5.9        |
| <b>Greenville WIA</b>        | <b>219,804</b> | <b>220,674</b> | <b>218,296</b> | <b>10,347</b> | <b>11,202</b> | <b>11,271</b>    | <b>4.7</b> | <b>5.1</b> | <b>5.2</b> |
| Greenville County            | 219,804        | 220,674        | 218,296        | 10,347        | 11,202        | 11,271           | 4.7        | 5.1        | 5.2        |
| <b>Lowcountry WIA</b>        | <b>98,438</b>  | <b>99,604</b>  | <b>96,394</b>  | <b>5,021</b>  | <b>5,634</b>  | <b>5,108</b>     | <b>5.1</b> | <b>5.7</b> | <b>5.3</b> |
| Beaufort County              | 64,006         | 64,774         | 62,227         | 2,832         | 3,224         | 2,966            | 4.4        | 5.0        | 4.8        |
| Colleton County              | 16,268         | 16,453         | 16,320         | 1,103         | 1,214         | 1,033            | 6.8        | 7.4        | 6.3        |
| Hampton County               | 7,755          | 7,887          | 7,723          | 580           | 669           | 578              | 7.5        | 8.5        | 7.5        |
| Jasper County                | 10,409         | 10,490         | 10,124         | 506           | 527           | 531              | 4.9        | 5.0        | 5.2        |
| <b>Lower Savannah WIA</b>    | <b>139,274</b> | <b>141,059</b> | <b>141,438</b> | <b>9,301</b>  | <b>10,780</b> | <b>10,290</b>    | <b>6.7</b> | <b>7.6</b> | <b>7.3</b> |
| Aiken County                 | 74,264         | 74,918         | 75,076         | 3,808         | 4,403         | 4,446            | 5.1        | 5.9        | 5.9        |
| Allendale County             | 3,578          | 3,638          | 3,504          | 496           | 542           | 420              | 13.9       | 14.9       | 12.0       |
| Bamberg County               | 6,084          | 6,196          | 6,320          | 578           | 665           | 600              | 9.5        | 10.7       | 9.5        |
| Barnwell County              | 8,621          | 8,797          | 8,943          | 821           | 952           | 908              | 9.5        | 10.8       | 10.2       |
| Calhoun County               | 7,038          | 7,117          | 7,095          | 377           | 454           | 457              | 5.4        | 6.4        | 6.4        |
| Orangeburg County            | 39,689         | 40,393         | 40,500         | 3,221         | 3,764         | 3,459            | 8.1        | 9.3        | 8.5        |
| <b>Midlands WIA</b>          | <b>319,997</b> | <b>322,020</b> | <b>320,290</b> | <b>15,506</b> | <b>17,434</b> | <b>16,839</b>    | <b>4.8</b> | <b>5.4</b> | <b>5.3</b> |
| Fairfield County             | 11,418         | 11,449         | 11,497         | 897           | 925           | 1,012            | 7.9        | 8.1        | 8.8        |
| Lexington County             | 131,687        | 132,211        | 131,578        | 5,500         | 5,985         | 5,822            | 4.2        | 4.5        | 4.4        |
| Richland County              | 176,892        | 178,360        | 177,215        | 9,109         | 10,524        | 10,005           | 5.1        | 5.9        | 5.6        |
| <b>Pee Dee WIA</b>           | <b>150,372</b> | <b>152,216</b> | <b>149,584</b> | <b>11,597</b> | <b>12,900</b> | <b>12,848</b>    | <b>7.7</b> | <b>8.5</b> | <b>8.6</b> |
| Chesterfield County          | 18,007         | 18,274         | 18,643         | 1,380         | 1,564         | 1,699            | 7.7        | 8.6        | 9.1        |
| Darlington County            | 31,831         | 32,026         | 30,802         | 2,252         | 2,365         | 2,228            | 7.1        | 7.4        | 7.2        |
| Dillon County                | 12,976         | 13,159         | 13,083         | 1,213         | 1,347         | 1,225            | 9.3        | 10.2       | 9.4        |
| Florence County              | 63,413         | 64,052         | 61,821         | 3,870         | 4,345         | 4,302            | 6.1        | 6.8        | 7.0        |
| Marion County                | 12,558         | 12,796         | 12,947         | 1,592         | 1,785         | 1,711            | 12.7       | 13.9       | 13.2       |
| Marlboro County              | 11,587         | 11,909         | 12,288         | 1,290         | 1,494         | 1,683            | 11.1       | 12.5       | 13.7       |
| <b>WorkLink WIA</b>          | <b>171,571</b> | <b>173,521</b> | <b>173,926</b> | <b>9,936</b>  | <b>10,645</b> | <b>11,187</b>    | <b>5.8</b> | <b>6.1</b> | <b>6.4</b> |
| Anderson County              | 83,755         | 84,863         | 85,361         | 5,237         | 5,269         | 5,489            | 6.3        | 6.2        | 6.4        |
| Oconee County                | 29,447         | 29,895         | 30,377         | 1,949         | 2,236         | 2,483            | 6.6        | 7.5        | 8.2        |
| Pickens County               | 58,369         | 58,763         | 58,188         | 2,750         | 3,140         | 3,215            | 4.7        | 5.3        | 5.5        |
| <b>Santee - Lynchess WIA</b> | <b>93,645</b>  | <b>94,707</b>  | <b>96,650</b>  | <b>6,909</b>  | <b>7,475</b>  | <b>7,025</b>     | <b>7.4</b> | <b>7.9</b> | <b>7.3</b> |
| Clarendon County             | 12,358         | 12,597         | 12,856         | 1,084         | 1,248         | 1,171            | 8.8        | 9.9        | 9.1        |
| Kershaw County               | 29,881         | 29,838         | 29,669         | 1,792         | 1,740         | 1,676            | 6.0        | 5.8        | 5.6        |
| Lee County                   | 8,023          | 8,113          | 8,084          | 708           | 768           | 764              | 8.8        | 9.5        | 9.5        |
| Sumter County                | 43,383         | 44,159         | 46,041         | 3,325         | 3,719         | 3,414            | 7.7        | 8.4        | 7.4        |
| <b>Trident WIA</b>           | <b>310,157</b> | <b>311,086</b> | <b>308,616</b> | <b>14,459</b> | <b>15,408</b> | <b>14,687</b>    | <b>4.7</b> | <b>5.0</b> | <b>4.8</b> |
| Berkeley County              | 74,926         | 75,000         | 74,375         | 3,957         | 4,036         | 3,831            | 5.3        | 5.4        | 5.2        |
| Charleston County            | 173,262        | 173,988        | 172,630        | 7,578         | 8,315         | 7,937            | 4.4        | 4.8        | 4.8        |
| Dorchester County            | 61,969         | 62,098         | 61,611         | 2,924         | 3,057         | 2,919            | 4.7        | 4.9        | 4.7        |
| <b>Upper Savannah WIA</b>    | <b>116,639</b> | <b>117,956</b> | <b>119,666</b> | <b>7,842</b>  | <b>8,723</b>  | <b>9,103</b>     | <b>6.7</b> | <b>7.4</b> | <b>7.6</b> |
| Abbeville County             | 11,025         | 11,157         | 11,783         | 850           | 894           | 1,125            | 7.7        | 8.0        | 9.5        |
| Edgefield County             | 10,889         | 11,004         | 11,009         | 661           | 767           | 755              | 6.1        | 7.0        | 6.9        |
| Greenwood County             | 29,990         | 30,386         | 31,536         | 2,029         | 2,250         | 2,449            | 6.8        | 7.4        | 7.8        |
| Laurens County               | 34,412         | 34,780         | 34,264         | 2,416         | 2,782         | 2,640            | 7.0        | 8.0        | 7.7        |
| McCormick County             | 3,490          | 3,528          | 3,574          | 380           | 402           | 417              | 10.9       | 11.4       | 11.7       |
| Newberry County              | 17,503         | 17,715         | 18,045         | 1,068         | 1,137         | 1,124            | 6.1        | 6.4        | 6.2        |
| Saluda County                | 9,330          | 9,386          | 9,455          | 438           | 491           | 593              | 4.7        | 5.2        | 6.3        |
| <b>Upstate WIA</b>           | <b>168,045</b> | <b>169,433</b> | <b>170,072</b> | <b>10,692</b> | <b>11,599</b> | <b>11,487</b>    | <b>6.4</b> | <b>6.8</b> | <b>6.8</b> |
| Cherokee County              | 24,725         | 24,888         | 25,193         | 1,983         | 2,010         | 1,864            | 8.0        | 8.1        | 7.4        |
| Spartanburg County           | 131,923        | 133,036        | 132,957        | 7,569         | 8,394         | 8,358            | 5.7        | 6.3        | 6.3        |
| Union County                 | 11,397         | 11,509         | 11,922         | 1,140         | 1,195         | 1,265            | 10.0       | 10.4       | 10.6       |
| <b>Waccamaw WIA</b>          | <b>171,178</b> | <b>172,001</b> | <b>168,836</b> | <b>12,087</b> | <b>14,054</b> | <b>11,310</b>    | <b>7.1</b> | <b>8.2</b> | <b>6.7</b> |
| Georgetown County            | 28,986         | 29,393         | 28,766         | 2,136         | 2,458         | 2,147            | 7.4        | 8.4        | 7.5        |
| Horry County                 | 127,039        | 127,163        | 124,619        | 8,493         | 9,906         | 7,601            | 6.7        | 7.8        | 6.1        |
| Williamsburg County          | 15,153         | 15,445         | 15,451         | 1,458         | 1,690         | 1,562            | 9.6        | 10.9       | 10.1       |