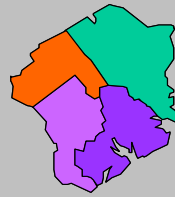


Labor Force Data by  
Workforce Investment Area  
January 2009



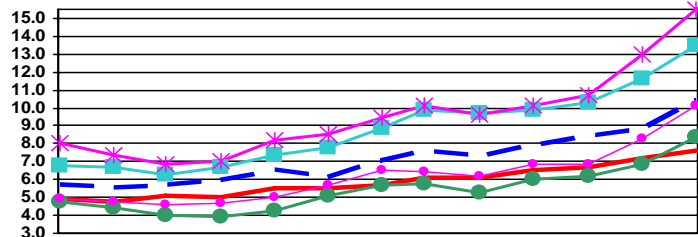
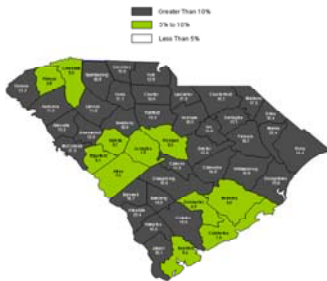
Lowcountry

Labor Force Data - January 2009

	Labor Force	Employment	Unemployment	Unemployment Rate
Lowcountry WIA	98,789	88,927	9,862	10.0
Beaufort County	63,842	58,501	5,341	8.4
Colleton County	16,897	14,623	2,274	13.5
Hampton County	7,826	6,612	1,214	15.5
Jasper County	10,224	9,191	1,033	10.1

Unemployment in the Lowcountry WIA increased from 8.4% in December to 10.0% in January. Hampton County reported the highest rate at 15.5%, while Beaufort County had the lowest rate at 8.4%. The state's unemployment rate increased from 8.8% in December to 10.4% in January.

Unemployment Rates  
January 2008 - January 2009



	Jan-08	Feb-08	Mar-08	Apr-08	May-08	Jun-08	Jul-08	Aug-08	Sep-08	Oct-08	Nov-08	Dec-08	Jan-09
SC	5.7	5.5	5.7	5.9	6.5	6.1	7.0	7.6	7.3	7.9	8.4	8.8	10.4
US	4.9	4.8	5.1	5.0	5.5	5.5	5.7	6.1	6.1	6.5	6.7	7.2	7.6
Beaufort	4.8	4.4	4.0	3.9	4.3	5.1	5.7	5.8	5.3	6.0	6.2	6.9	8.4
Colleton	6.8	6.7	6.3	6.7	7.4	7.8	8.9	9.9	9.7	9.9	10.3	11.6	13.5
Hampton	8.0	7.4	6.9	7.0	8.2	8.5	9.5	10.1	9.6	10.1	10.7	13.0	15.5
Jasper	4.9	4.8	4.6	4.7	5.0	5.7	6.5	6.4	6.2	6.9	6.9	8.3	10.1



Contact: Sam McClary  
803-737-2660  
South Carolina Employment Security Commission  
Labor Market Information/LAUS Unit



**WIA Labor Force Data January 2009**

	LABOR FORCE			UNEMPLOYMENT			% OF LABOR FORCE		
	January 2009	December 2008	January 2008	January 2009	December 2008	January 2008	January 2009	December 2008	January 2008
<b>Catawba WIA</b>	<b>155,674</b>	<b>153,130</b>	<b>150,468</b>	<b>22,431</b>	<b>17,693</b>	<b>11,460</b>	<b>14.4</b>	<b>11.6</b>	<b>7.6</b>
Chester County	15,852	15,766	15,380	3,105	2,760	1,809	19.6	17.5	11.8
Lancaster County	30,007	29,525	29,636	5,255	4,282	3,252	17.5	14.5	11.0
York County	109,815	107,839	105,452	14,071	10,651	6,399	12.8	9.9	6.1
<b>Greenville WIA</b>	<b>226,550</b>	<b>226,319</b>	<b>221,299</b>	<b>20,255</b>	<b>17,058</b>	<b>10,315</b>	<b>8.9</b>	<b>7.5</b>	<b>4.7</b>
Greenville County	226,550	226,319	221,299	20,255	17,058	10,315	8.9	7.5	4.7
<b>Lowcountry WIA</b>	<b>98,789</b>	<b>98,924</b>	<b>95,136</b>	<b>9,862</b>	<b>8,266</b>	<b>5,165</b>	<b>10.0</b>	<b>8.4</b>	<b>5.4</b>
Beaufort County	63,842	64,024	61,598	5,341	4,447	2,979	8.4	6.9	4.8
Colleton County	16,897	16,898	16,216	2,274	1,960	1,098	13.5	11.6	6.8
Hampton County	7,826	7,797	7,633	1,214	1,014	609	15.5	13.0	8.0
Jasper County	10,224	10,205	9,689	1,033	845	479	10.1	8.3	4.9
<b>Lower Savannah WIA</b>	<b>142,712</b>	<b>142,440</b>	<b>210,952</b>	<b>16,969</b>	<b>15,075</b>	<b>9,841</b>	<b>11.9</b>	<b>10.6</b>	<b>4.7</b>
Aiken County	76,130	75,770	74,132	6,472	5,728	4,047	8.5	7.6	5.5
Allendale County	3,432	3,437	74,132	804	734	494	23.4	21.4	15.0
Bamberg County	6,251	6,314	6,264	1,032	966	606	16.5	15.3	9.7
Barnwell County	9,125	9,157	8,801	1,523	1,409	867	16.7	15.4	9.9
Calhoun County	7,157	7,144	6,861	820	731	412	11.5	10.2	6.0
Orangeburg County	40,617	40,618	40,762	6,318	5,507	3,415	15.6	13.6	8.4
<b>Midlands WIA</b>	<b>327,566</b>	<b>328,153</b>	<b>321,664</b>	<b>27,187</b>	<b>24,203</b>	<b>15,985</b>	<b>8.3</b>	<b>7.4</b>	<b>5.0</b>
Fairfield County	11,503	11,781	10,989	1,529	1,688	839	13.3	14.3	7.6
Lexington County	133,738	133,678	131,305	10,082	8,552	5,467	7.5	6.4	4.2
Richland County	182,325	182,694	179,370	15,576	13,963	9,679	8.5	7.6	5.4
<b>Pee Dee WIA</b>	<b>154,430</b>	<b>153,672</b>	<b>149,525</b>	<b>21,583</b>	<b>18,615</b>	<b>11,752</b>	<b>14.0</b>	<b>12.1</b>	<b>7.9</b>
Chesterfield County	19,352	18,907	18,354	3,238	2,437	1,422	16.7	12.9	7.7
Darlington County	32,341	32,350	31,016	4,221	3,873	2,156	13.1	12.0	7.0
Dillon County	13,119	13,138	12,724	2,146	1,880	1,227	16.4	14.3	9.6
Florence County	64,372	64,086	62,944	6,900	5,886	3,959	10.7	9.2	6.3
Marion County	13,531	13,253	12,759	3,032	2,496	1,624	22.4	18.8	12.7
Marlboro County	11,715	11,938	11,728	2,046	2,043	1,364	17.5	17.1	11.6
<b>WorkLink WIA</b>	<b>177,007</b>	<b>176,004</b>	<b>91,967</b>	<b>19,923</b>	<b>16,255</b>	<b>9,727</b>	<b>11.3</b>	<b>9.2</b>	<b>10.6</b>
Anderson County	86,018	85,664	3,304	9,909	8,209	4,813	11.5	9.6	5.7
Oconee County	31,026	30,682	30,472	4,139	3,254	2,040	13.3	10.6	6.7
Pickens County	59,963	59,658	58,191	5,875	4,792	2,874	9.8	8.0	4.9
<b>Santee - Lynchess WIA</b>	<b>94,380</b>	<b>93,616</b>	<b>93,343</b>	<b>11,940</b>	<b>9,624</b>	<b>6,809</b>	<b>12.7</b>	<b>10.3</b>	<b>7.3</b>
Clarendon County	12,618	12,458	12,454	1,990	1,565	1,133	15.8	12.6	9.1
Kershaw County	30,715	30,358	29,568	3,220	2,537	1,588	10.5	8.4	5.4
Lee County	8,242	8,193	8,025	1,204	976	694	14.6	11.9	8.6
Sumter County	42,805	42,607	43,296	5,526	4,546	3,394	12.9	10.7	7.8
<b>Trident WIA</b>	<b>321,503</b>	<b>319,906</b>	<b>312,348</b>	<b>27,767</b>	<b>23,636</b>	<b>14,367</b>	<b>8.6</b>	<b>7.4</b>	<b>4.6</b>
Berkeley County	80,278	79,597	77,435	7,732	6,425	3,841	9.6	8.1	5.0
Charleston County	176,926	176,522	172,938	14,048	12,239	7,706	7.9	6.9	4.5
Dorchester County	64,299	63,787	61,975	5,987	4,972	2,820	9.3	7.8	4.6
<b>Upper Savannah WIA</b>	<b>118,399</b>	<b>118,318</b>	<b>116,444</b>	<b>13,588</b>	<b>11,729</b>	<b>7,943</b>	<b>11.5</b>	<b>9.9</b>	<b>6.8</b>
Abbeville County	11,498	11,453	11,081	1,520	1,266	811	13.2	11.1	7.3
Edgefield County	11,168	11,126	10,917	1,020	922	707	9.1	8.3	6.5
Greenwood County	30,443	30,455	30,089	3,930	3,399	2,051	12.9	11.2	6.8
Laurens County	34,110	34,011	33,574	3,758	3,222	2,532	11.0	9.5	7.5
McCormick County	3,507	3,454	3,453	605	491	365	17.3	14.2	10.6
Newberry County	18,407	18,554	18,275	1,951	1,727	1,034	10.6	9.3	5.7
Saluda County	9,266	9,265	9,055	804	702	443	8.7	7.6	4.9
<b>Upstate WIA</b>	<b>180,654</b>	<b>177,965</b>	<b>172,703</b>	<b>21,472</b>	<b>17,911</b>	<b>10,628</b>	<b>11.9</b>	<b>10.1</b>	<b>6.2</b>
Cherokee County	26,186	25,838	25,534	4,086	3,351	1,837	15.6	13.0	7.2
Spartanburg County	142,318	140,171	135,562	15,313	12,838	7,704	10.8	9.2	5.7
Union County	12,150	11,956	11,607	2,073	1,722	1,087	17.1	14.4	9.4
<b>Waccamaw WIA</b>	<b>171,754</b>	<b>171,987</b>	<b>168,841</b>	<b>24,548</b>	<b>20,553</b>	<b>12,940</b>	<b>14.3</b>	<b>12.0</b>	<b>7.7</b>
Georgetown County	30,516	30,647	29,047	3,966	3,460	2,236	13.0	11.3	7.7
Horry County	125,570	125,630	124,547	18,106	14,896	9,160	14.4	11.9	7.4
Williamsburg County	15,668	15,710	15,247	2,476	2,197	1,544	15.8	14.0	10.1