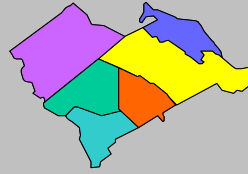


Labor Force Data by
Workforce Investment Area
January 2009



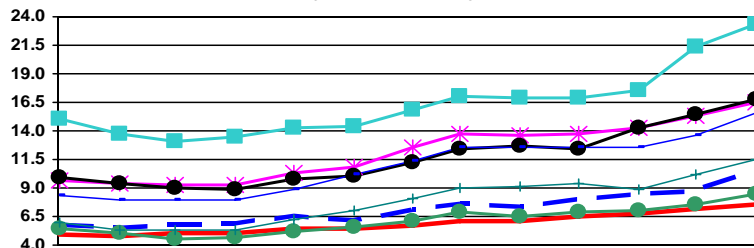
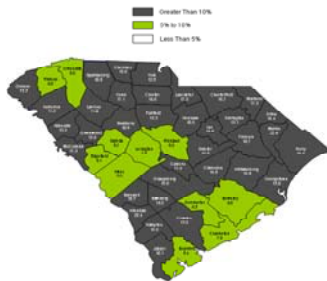
Lower
Savannah

Labor Force Data - January 2009

	Labor Force	Employment	Unemployment	Unemployment Rate
Lower Savannah WIA	142,712	125,743	16,969	11.9
Aiken County	76,130	69,658	6,472	8.5
Allendale County	3,432	2,628	804	23.4
Bamberg County	6,251	5,219	1,032	16.5
Barnwell County	9,125	7,602	1,523	16.7
Calhoun County	7,157	6,337	820	11.5
Orangeburg County	40,617	34,299	6,318	15.6

Unemployment in the Lower Savannah WIA increased from 10.6% in December to 11.9% in January. Allendale County reported the highest rate at 23.4%, while Aiken County had the lowest rate at 8.5%. The state's unemployment rate increased from 8.8% in December to 10.4% in January.

Unemployment Rates
January 2008 - January 2009



	Jan-08	Feb-08	Mar-08	Apr-08	May-08	Jun-08	Jul-08	Aug-08	Sep-08	Oct-08	Nov-08	Dec-08	Jan-09
SC	5.7	5.5	5.7	5.9	6.5	6.1	7.0	7.6	7.3	7.9	8.4	8.8	10.4
US	4.9	4.8	5.1	5.0	5.5	5.5	5.7	6.1	6.1	6.5	6.7	7.2	7.6
Aiken	5.5	5.1	4.5	4.6	5.2	5.6	6.1	6.9	6.5	6.9	7.0	7.6	8.5
Allendale	15.0	13.8	13.1	13.5	14.3	14.4	15.9	17.0	16.9	16.9	17.5	21.4	23.4
Bamberg	9.7	9.4	9.2	9.3	10.3	10.9	12.6	13.7	13.6	13.7	14.2	15.3	16.5
Barnwell	9.9	9.4	9.0	8.9	9.8	10.0	11.2	12.4	12.7	12.4	14.2	15.4	16.7
Calhoun	6.0	5.3	5.3	5.3	6.2	7.0	8.1	9.0	9.1	9.4	8.9	10.2	11.5
Orangeburg	8.4	8.0	7.9	7.9	8.9	10.2	11.4	12.6	12.5	12.5	12.5	13.6	15.6



Contact: Sam McClary
803-737-2660
South Carolina Employment Security Commission
Labor Market Information/LAUS Unit



WIA Labor Force Data January 2009

	LABOR FORCE			UNEMPLOYMENT			% OF LABOR FORCE		
	January 2009	December 2008	January 2008	January 2009	December 2008	January 2008	January 2009	December 2008	January 2008
Catawba WIA	155,674	153,130	150,468	22,431	17,693	11,460	14.4	11.6	7.6
Chester County	15,852	15,766	15,380	3,105	2,760	1,809	19.6	17.5	11.8
Lancaster County	30,007	29,525	29,636	5,255	4,282	3,252	17.5	14.5	11.0
York County	109,815	107,839	105,452	14,071	10,651	6,399	12.8	9.9	6.1
Greenville WIA	226,550	226,319	221,299	20,255	17,058	10,315	8.9	7.5	4.7
Greenville County	226,550	226,319	221,299	20,255	17,058	10,315	8.9	7.5	4.7
Lowcountry WIA	98,789	98,924	95,136	9,862	8,266	5,165	10.0	8.4	5.4
Beaufort County	63,842	64,024	61,598	5,341	4,447	2,979	8.4	6.9	4.8
Colleton County	16,897	16,898	16,216	2,274	1,960	1,098	13.5	11.6	6.8
Hampton County	7,826	7,797	7,633	1,214	1,014	609	15.5	13.0	8.0
Jasper County	10,224	10,205	9,689	1,033	845	479	10.1	8.3	4.9
Lower Savannah WIA	142,712	142,440	210,952	16,969	15,075	9,841	11.9	10.6	4.7
Aiken County	76,130	75,770	74,132	6,472	5,728	4,047	8.5	7.6	5.5
Allendale County	3,432	3,437	74,132	804	734	494	23.4	21.4	15.0
Bamberg County	6,251	6,314	6,264	1,032	966	606	16.5	15.3	9.7
Barnwell County	9,125	9,157	8,801	1,523	1,409	867	16.7	15.4	9.9
Calhoun County	7,157	7,144	6,861	820	731	412	11.5	10.2	6.0
Orangeburg County	40,617	40,618	40,762	6,318	5,507	3,415	15.6	13.6	8.4
Midlands WIA	327,566	328,153	321,664	27,187	24,203	15,985	8.3	7.4	5.0
Fairfield County	11,503	11,781	10,989	1,529	1,688	839	13.3	14.3	7.6
Lexington County	133,738	133,678	131,305	10,082	8,552	5,467	7.5	6.4	4.2
Richland County	182,325	182,694	179,370	15,576	13,963	9,679	8.5	7.6	5.4
Pee Dee WIA	154,430	153,672	149,525	21,583	18,615	11,752	14.0	12.1	7.9
Chesterfield County	19,352	18,907	18,354	3,238	2,437	1,422	16.7	12.9	7.7
Darlington County	32,341	32,350	31,016	4,221	3,873	2,156	13.1	12.0	7.0
Dillon County	13,119	13,138	12,724	2,146	1,880	1,227	16.4	14.3	9.6
Florence County	64,372	64,086	62,944	6,900	5,886	3,959	10.7	9.2	6.3
Marion County	13,531	13,253	12,759	3,032	2,496	1,624	22.4	18.8	12.7
Marlboro County	11,715	11,938	11,728	2,046	2,043	1,364	17.5	17.1	11.6
WorkLink WIA	177,007	176,004	91,967	19,923	16,255	9,727	11.3	9.2	10.6
Anderson County	86,018	85,664	3,304	9,909	8,209	4,813	11.5	9.6	5.7
Oconee County	31,026	30,682	30,472	4,139	3,254	2,040	13.3	10.6	6.7
Pickens County	59,963	59,658	58,191	5,875	4,792	2,874	9.8	8.0	4.9
Santee - Lynchess WIA	94,380	93,616	93,343	11,940	9,624	6,809	12.7	10.3	7.3
Clarendon County	12,618	12,458	12,454	1,990	1,565	1,133	15.8	12.6	9.1
Kershaw County	30,715	30,358	29,568	3,220	2,537	1,588	10.5	8.4	5.4
Lee County	8,242	8,193	8,025	1,204	976	694	14.6	11.9	8.6
Sumter County	42,805	42,607	43,296	5,526	4,546	3,394	12.9	10.7	7.8
Trident WIA	321,503	319,906	312,348	27,767	23,636	14,367	8.6	7.4	4.6
Berkeley County	80,278	79,597	77,435	7,732	6,425	3,841	9.6	8.1	5.0
Charleston County	176,926	176,522	172,938	14,048	12,239	7,706	7.9	6.9	4.5
Dorchester County	64,299	63,787	61,975	5,987	4,972	2,820	9.3	7.8	4.6
Upper Savannah WIA	118,399	118,318	116,444	13,588	11,729	7,943	11.5	9.9	6.8
Abbeville County	11,498	11,453	11,081	1,520	1,266	811	13.2	11.1	7.3
Edgefield County	11,168	11,126	10,917	1,020	922	707	9.1	8.3	6.5
Greenwood County	30,443	30,455	30,089	3,930	3,399	2,051	12.9	11.2	6.8
Laurens County	34,110	34,011	33,574	3,758	3,222	2,532	11.0	9.5	7.5
McCormick County	3,507	3,454	3,453	605	491	365	17.3	14.2	10.6
Newberry County	18,407	18,554	18,275	1,951	1,727	1,034	10.6	9.3	5.7
Saluda County	9,266	9,265	9,055	804	702	443	8.7	7.6	4.9
Upstate WIA	180,654	177,965	172,703	21,472	17,911	10,628	11.9	10.1	6.2
Cherokee County	26,186	25,838	25,534	4,086	3,351	1,837	15.6	13.0	7.2
Spartanburg County	142,318	140,171	135,562	15,313	12,838	7,704	10.8	9.2	5.7
Union County	12,150	11,956	11,607	2,073	1,722	1,087	17.1	14.4	9.4
Waccamaw WIA	171,754	171,987	168,841	24,548	20,553	12,940	14.3	12.0	7.7
Georgetown County	30,516	30,647	29,047	3,966	3,460	2,236	13.0	11.3	7.7
Horry County	125,570	125,630	124,547	18,106	14,896	9,160	14.4	11.9	7.4
Williamsburg County	15,668	15,710	15,247	2,476	2,197	1,544	15.8	14.0	10.1