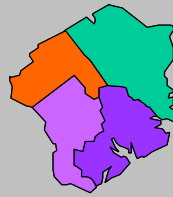


Labor Force Data by
Workforce Investment Area
June 2008



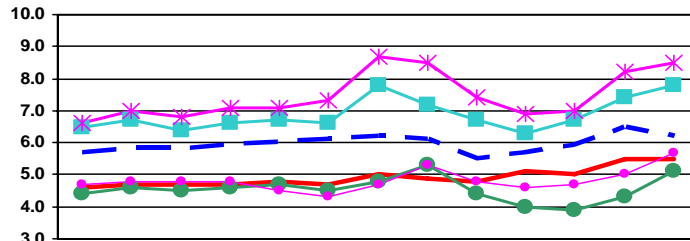
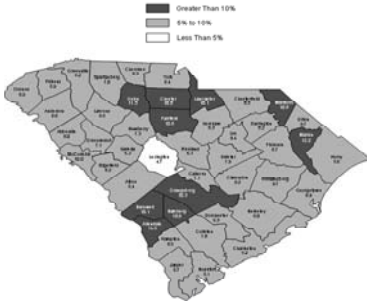
Lowcountry

Labor Force Data - June 2008

	Labor Force	Employment	Unemployment	Unemployment Rate
Lowcountry WIA	102,410	96,394	6,016	5.9
Beaufort County	66,495	63,118	3,377	5.1
Colleton County	16,994	15,662	1,332	7.8
Hampton County	8,087	7,397	690	8.5
Jasper County	10,834	10,217	617	5.7

Unemployment in the Lowcountry WIA increased from 5.2% in May to 5.9% in June. Hampton County reported the highest rate at 8.5%, while Beaufort County had the lowest rate at 5.1%. The state's unemployment rate dropped from 6.5% in May to 6.2% in June.

Unemployment Rates
June 2007 - June 2008



	Jun-07	Jul-07	Aug-07	Sep-07	Oct-07	Nov-07	Dec-07	Jan-08	Feb-08	Mar-08	Apr-08	May-08	Jun-08
SC	5.7	5.8	5.8	5.9	6.0	6.1	6.2	6.1	5.5	5.7	5.9	6.5	6.2
US	4.6	4.7	4.7	4.7	4.8	4.7	5.0	4.9	4.8	5.1	5.0	5.5	5.5
Beaufort	4.4	4.6	4.5	4.6	4.7	4.5	4.8	5.3	4.4	4.0	3.9	4.3	5.1
Colleton	6.5	6.7	6.4	6.6	6.7	6.6	7.8	7.2	6.7	6.3	6.7	7.4	7.8
Hampton	6.6	7.0	6.8	7.1	7.1	7.3	8.7	8.5	7.4	6.9	7.0	8.2	8.5
Jasper	4.7	4.8	4.8	4.8	4.5	4.3	4.7	5.3	4.8	4.6	4.7	5.0	5.7



Contact: Sam McClary
803-737-2660
South Carolina Employment Security Commission
Labor Market Information/LAUS Unit



WIA Labor Force Data June 2008

	LABOR FORCE			UNEMPLOYMENT			% OF LABOR FORCE		
	June 2008	May 2008	June 2007	June 2008	May 2008	June 2007	June 2008	May 2008	June 2007
Catawba WIA	153,309	152,660	151,025	11,569	11,922	10,946	7.5	7.8	7.2
Chester County	15,614	15,537	15,754	1,694	1,707	1,780	10.8	11.0	11.3
Lancaster County	29,999	29,867	29,893	3,015	3,045	2,775	10.1	10.2	9.3
York County	107,696	107,256	105,378	6,860	7,170	6,391	6.4	6.7	6.1
Greenville WIA	226,044	224,277	222,266	11,768	11,057	10,971	5.2	4.9	4.9
Greenville County	226,044	224,277	222,266	11,768	11,057	10,971	5.2	4.9	4.9
Lowcountry WIA	102,410	100,969	103,328	6,016	5,246	5,095	5.9	5.2	4.9
Beaufort County	66,495	65,538	67,307	3,377	2,823	2,952	5.1	4.3	4.4
Colleton County	16,994	16,762	17,018	1,332	1,237	1,104	7.8	7.4	6.5
Hampton County	8,087	7,986	8,077	690	655	530	8.5	8.2	6.6
Jasper County	10,834	10,683	10,926	617	531	509	5.7	5.0	4.7
Lower Savannah WIA	143,747	142,074	144,221	11,012	10,057	10,520	7.7	7.1	7.3
Aiken County	75,914	75,474	76,489	4,078	3,946	4,702	5.4	5.2	6.1
Allendale County	3,718	3,671	3,639	541	526	390	14.6	14.3	10.7
Bamberg County	6,331	6,233	6,371	693	639	612	10.9	10.3	9.6
Barnwell County	8,919	8,838	8,996	898	870	860	10.1	9.8	9.6
Calhoun County	7,264	7,163	7,216	517	441	448	7.1	6.2	6.2
Orangeburg County	41,601	40,695	41,510	4,285	3,635	3,508	10.3	8.9	8.5
Midlands WIA	327,197	324,499	326,178	18,763	17,232	16,813	5.7	5.3	5.2
Fairfield County	11,916	11,860	11,769	1,259	1,243	1,080	10.6	10.5	9.2
Lexington County	134,188	133,075	133,885	6,367	5,738	5,678	4.7	4.3	4.2
Richland County	181,093	179,564	180,524	11,137	10,251	10,055	6.1	5.7	5.6
Pee Dee WIA	154,245	152,286	153,826	12,723	11,801	12,005	8.2	7.7	7.8
Chesterfield County	18,678	18,387	18,850	1,549	1,397	1,541	8.3	7.6	8.2
Darlington County	32,658	32,148	32,016	2,662	2,346	2,170	8.2	7.3	6.8
Dillon County	13,335	13,169	13,462	1,290	1,228	1,195	9.7	9.3	8.9
Florence County	64,737	64,001	64,058	4,356	4,011	3,979	6.7	6.3	6.2
Marion County	13,008	12,843	13,105	1,590	1,547	1,564	12.2	12.0	11.9
Marlboro County	11,829	11,738	12,335	1,276	1,272	1,556	10.8	10.8	12.6
WorkLink WIA	176,555	175,161	175,595	11,343	10,410	10,612	6.4	5.9	6.0
Anderson County	85,735	85,180	85,636	5,697	5,151	5,313	6.6	6.0	6.2
Oconee County	30,376	30,081	30,795	2,101	1,977	2,242	6.9	6.6	7.3
Pickens County	60,444	59,900	59,164	3,545	3,282	3,057	5.9	5.5	5.2
Santee - Lynchess WIA	96,937	96,381	97,873	7,470	7,338	6,892	7.7	7.6	7.0
Clarendon County	12,865	12,756	13,053	1,183	1,175	1,124	9.2	9.2	8.6
Kershaw County	30,365	30,218	30,227	1,912	1,872	1,688	6.3	6.2	5.6
Lee County	8,263	8,162	8,359	773	742	726	9.4	9.1	8.7
Sumter County	45,444	45,245	46,234	3,602	3,549	3,354	7.9	7.8	7.3
Trident WIA	322,657	318,025	318,975	17,457	15,278	14,821	5.4	4.8	4.6
Berkeley County	77,958	76,818	76,770	4,709	4,158	3,772	6.0	5.4	4.9
Charleston County	180,362	177,654	178,594	9,354	8,020	8,172	5.2	4.5	4.6
Dorchester County	64,337	63,553	63,611	3,394	3,100	2,877	5.3	4.9	4.5
Upper Savannah WIA	119,768	118,775	120,436	8,255	7,882	8,470	6.9	6.6	7.0
Abbeville County	11,374	11,269	11,593	913	860	981	8.0	7.6	8.5
Edgefield County	11,114	11,067	11,161	685	683	739	6.2	6.2	6.6
Greenwood County	30,970	30,732	31,489	2,187	2,107	2,282	7.1	6.9	7.2
Laurens County	35,003	34,736	34,766	2,271	2,165	2,489	6.5	6.2	7.2
McCormick County	3,539	3,516	3,618	355	352	378	10.0	10.0	10.4
Newberry County	18,254	17,981	18,276	1,337	1,214	1,103	7.3	6.8	6.0
Saluda County	9,514	9,474	9,533	507	501	498	5.3	5.3	5.2
Upstate WIA	173,337	171,458	171,425	12,944	11,543	11,304	7.5	6.7	6.6
Cherokee County	25,486	25,299	25,491	2,123	2,049	1,890	8.3	8.1	7.4
Spartanburg County	135,988	134,475	134,210	9,475	8,275	8,311	7.0	6.2	6.2
Union County	11,863	11,684	11,724	1,346	1,219	1,103	11.3	10.4	9.4
Waccamaw WIA	185,712	182,114	182,462	11,441	10,984	9,255	6.2	6.0	5.1
Georgetown County	30,272	29,874	30,323	2,090	1,998	1,824	6.9	6.7	6.0
Horry County	139,718	136,730	136,323	7,830	7,530	6,009	5.6	5.5	4.4
Williamsburg County	15,722	15,510	15,816	1,521	1,456	1,422	9.7	9.4	9.0