

# INSIGHTS

September 2011

SC Department of Employment and Workforce

## Economic Indicators

	United States	S.C.
Labor Force	154,017,000	2,169,414
Employed	140,025,000	1,931,654
Unemployed	13,992,000	237,760
Unemployment Rate	9.1%	11.0%

## Average Hours & Earnings

	United States	S.C.
Manufacturing		
Avg. Weekly Earnings	\$ 953.14	\$ 713.58
Avg. Weekly Hours	40.2	42.5
Avg. Hourly Wages	\$ 23.71	\$ 16.79

## Job Growth (Year Over Year)

	% Change
Anderson MSA	1.19%
Charleston MSA	0.81%
Greenville MSA	2.03%
Myrtle Beach MSA	2.91%

## Labor Force Participation Rate

	2011	2010
U.S. Participation Rate	64.2%	64.7%
S.C. Participation Rate	60.8%	61.1%

## Employment to Population Ratio

	2011	2010
U.S. Population Ratio	58.3%	58.5%
S.C. Population Ratio	54.2%	54.4%

## United States Consumer Price Index

12-month CPI	3.9%
--------------	------

## In the News

The Community Profile Report has been developed to provide real-time statistics on South Carolina's workforce.

### Community Profile Report



View the [S.C. Employment Situation Report](#).

## South Carolina Employment Trends

South Carolina's estimated job count in September declined 10,600 (not seasonally adjusted) from August. Manufacturing, which has seen gains in 10 of the last 12 months, declined 2,000 in September, but is up 9,500 from a year ago.

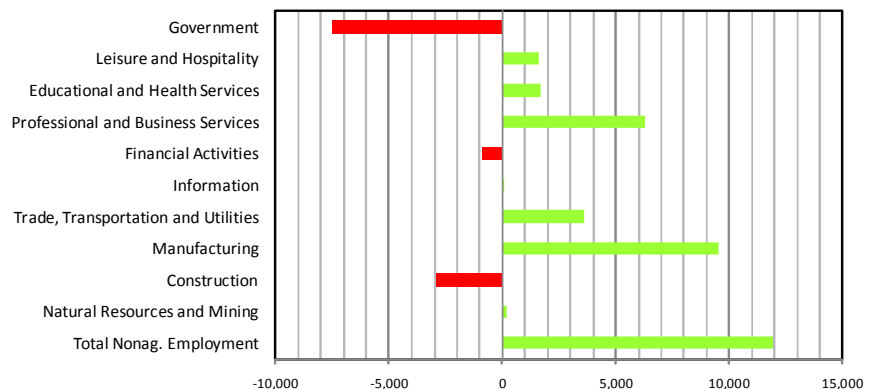
Increases were recorded in Government (+9,700), mainly in Education Services, and Professional and Business Services (+2,400) from August. As is usual this time of year, Leisure and Hospitality experienced a drop of 12,200 in employment. Declines were also seen in Trade, Transportation, and Utilities (-4,400) and Manufacturing employment (-2,000).

Of the state's Metropolitan Statistical Areas, Greenville (+2,400), Spartanburg (+1,700), Columbia (+300) and Sumter (+200) showed job gains from the previous month. Myrtle Beach (-8,600), Charleston (-2,500), Florence (-700), and Anderson (-500) reported slumps.


Over the year, nonfarm payroll employment continued to expand, increasing by 11,900. This upward trend was caused mainly by advances in Manufacturing (primarily Durable Goods Manufacturing), Professional and Business Services, and Health Care and Social Assistance.

The state's average weekly manufacturing hours had a slight increase of 0.1 hour over the past year to 42.5 hours. Weekly manufacturing pay increased \$9.74, from \$703.84 to \$713.58, over the month.


## South Carolina Job Changes by Industry September 2010 - September 2011



*Insights is prepared in conjunction with the U.S. Department of Labor, Bureau of Labor Statistics. The current month's estimates are preliminary, while all previous data are subject to revision. All estimates are projected from a first quarter 2010 benchmark.*

Employment  
7,061 

Unemployment  
1,596 

Unemployment  
Rate 0.1% 

The state's seasonally adjusted unemployment rate dropped slightly from 11.1% in August to 11.0% in September.

For the fifth straight month the state's labor force increased, and is now estimated at 2,169,414.

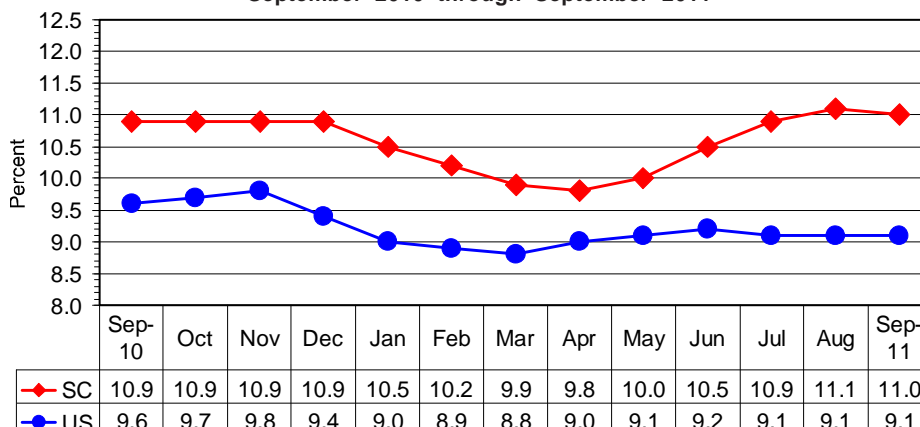
September saw a rise in employment of 7,061, bringing the total number of employed to 1,931,654.

There were 237,760 unemployed in the state – an increase of 1,500 compared to a year ago.

The national unemployment rate remained unchanged from last month at 9.1%.

### Unemployment Rate Dips

U.S. & S.C. Unemployment Rates  
September 2010 through September 2011



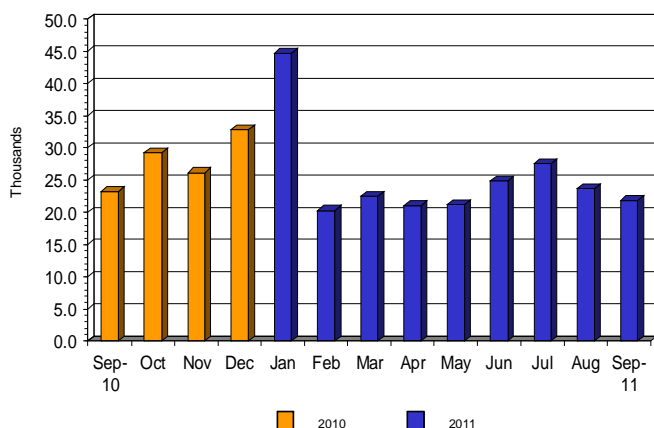
Regional Changes in Unemployment Rates

States	Sept 2011	Aug. 2011	% Change	Sept 2010	% Change
South Carolina	11.0	11.1	-0.1	10.9	0.1
Florida	10.6	10.7	-0.1	11.7	-1.1
North Carolina	10.5	10.4	0.1	10.0	0.5
Georgia	10.3	10.2	0.1	10.2	0.1

### September Initial Unemployment Claims

There were 21,808 initial claims filed in September, which was a decrease of 1,876 from the previous month, and 1,420 fewer claims than in September 2010. Unemployment benefits paid also dropped \$5,904,576 from last month. In addition, the number of exhausted benefits, those who depleted the balance of their regular unemployment benefits, fell 1,321 from a year ago.

S.C. Unemployment Insurance Initial Claims\*  
September 2010 through September 2011



#### SC Unemployment Activities

Total Initial Claims*	21,808
Regular UI Benefits Paid	\$31,802,851
UI Benefits Exhausted	4,769
Average Duration Benefits Paid (weeks)	15.5
Average Weekly Benefits Amount	\$239.55

\* All programs

## September Unemployment Rates by County

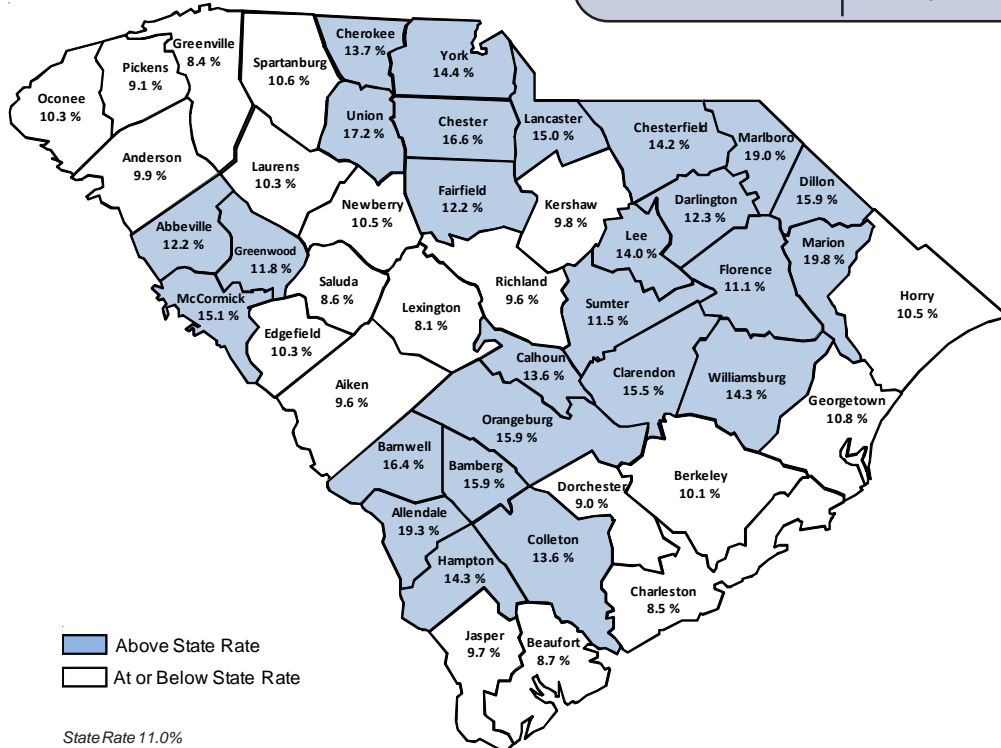
### State Unemployment Rates

Nevada	13.4
California	11.9
D.C.	11.1
Michigan	11.1
<b>South Carolina</b>	<b>11.0</b>
Florida	10.6
Mississippi	10.6
North Carolina	10.5
Rhode Island	10.5
Georgia	10.3
Illinois	10.0
Alabama	9.8
Tennessee	9.8
Kentucky	9.7
Oregon	9.6
New Jersey	9.2
Arizona	9.1
Ohio	9.1
Washington	9.1
Idaho	9.0
Connecticut	8.9
Indiana	8.9
Missouri	8.7
Texas	8.5
Arkansas	8.3
Colorado	8.3
Pennsylvania	8.3
West Virginia	8.2
Delaware	8.1
New York	8.0
Wisconsin	7.8
Montana	7.7
Alaska	7.6
Maine	7.5
Maryland	7.4
Utah	7.4
Massachusetts	7.3
Louisiana	6.9
Minnesota	6.9
Kansas	6.7
New Mexico	6.6
Virginia	6.5
Hawaii	6.4
Iowa	6.0
Oklahoma	5.9
Vermont	5.8
Wyoming	5.8
New Hampshire	5.4
South Dakota	4.6
Nebraska	4.2
North Dakota	3.5

In the past month, 38 counties experienced a decline in their unemployment rates while seven counties saw rate increases and one county's rate was unchanged. The largest drops were in Saluda and Darlington counties with decreases of 1.2% and 1.1%, respectively. The largest increases occurred in Horry and Marlboro counties.

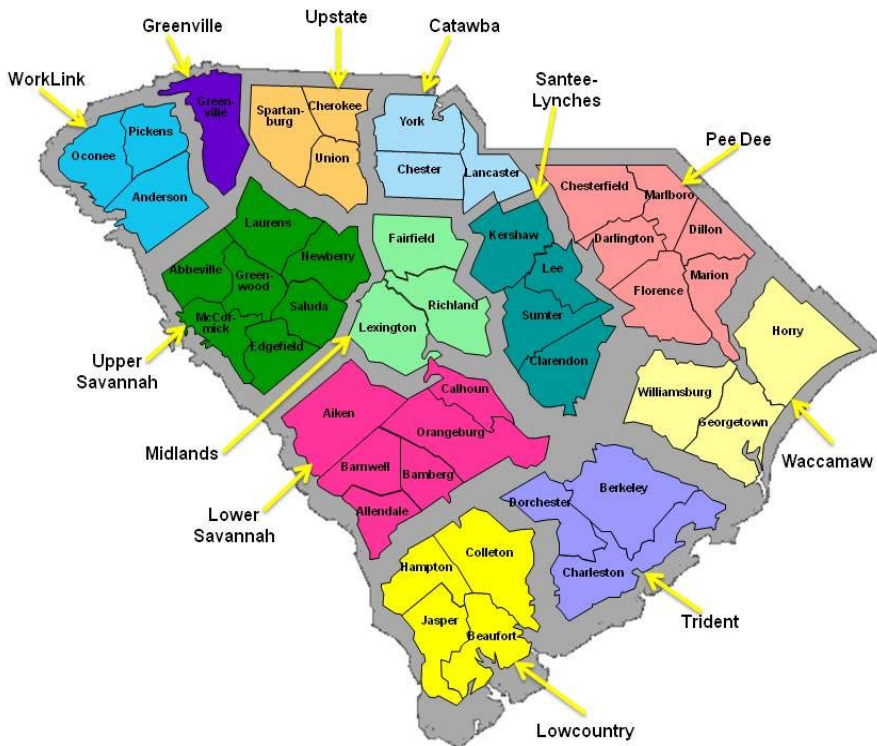
York and Fairfield counties have seen the largest rate declines over the past year (September 2010 to September 2011). Greenville, Horry, and Charleston counties reported the largest number of people finding work over the year.

Highest County Unemployment Rates		Lowest County Unemployment Rates	
Marion	19.8%	Beaufort	8.7%
Allendale	19.3%	Saluda	8.6%
Marlboro	19.0%	Charleston	8.5%
Union	17.2%	Greenville	8.4%
Chester	16.6%	Lexington	8.1%



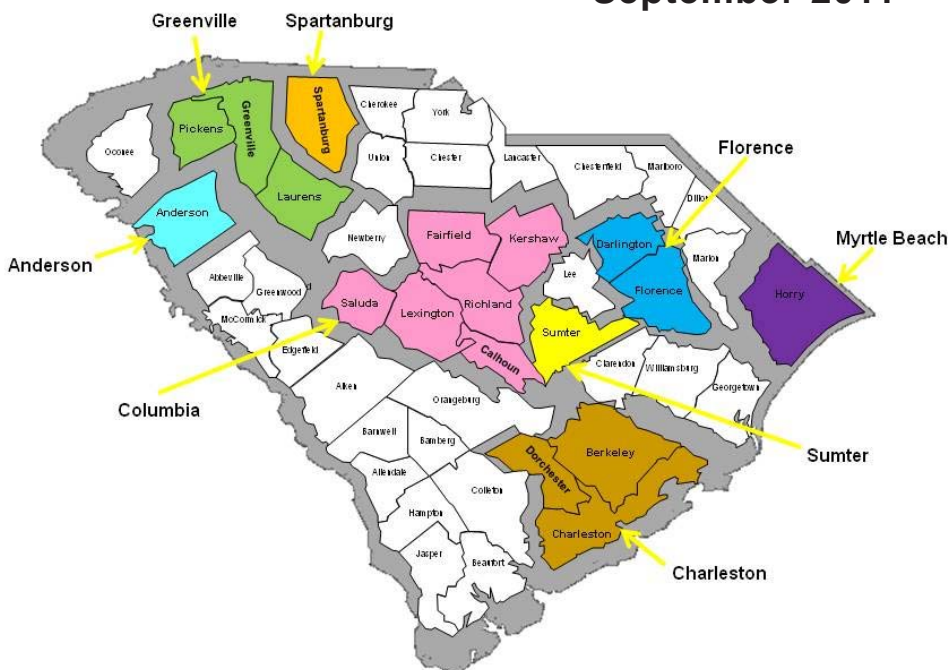
Areas	Unemployed		Areas	Unemployed		Areas	Unemployed	
	September 2011	September 2010		September 2011	September 2010		September 2011	September 2010
Abbeville	1,315	1,381	Darlington	3,803	3,822	Lee	1,164	1,153
Aiken	7,373	6,385	Dillon	2,181	2,131	Lexington	10,814	10,550
Allendale	647	599	Dorchester	5,823	5,942	Marion	2,483	2,474
Anderson	8,471	8,824	Edgefield	1,145	1,094	Marlboro	2,221	2,249
Bamberg	1,014	928	Fairfield	1,309	1,495	McCormick	499	505
Barnwell	1,420	1,414	Florence	7,090	6,844	Newberry	1,917	1,922
Beaufort	5,637	5,406	Georgetown	3,261	3,428	Oconee	3,147	3,386
Berkeley	8,321	7,969	Greenville	18,998	19,883	Orangeburg	6,495	6,073
Calhoun	932	790	Greenwood	3,578	3,547	Pickens	5,272	5,503
Charleston	15,120	15,241	Hampton	1,142	1,120	Richland	17,462	16,807
Cherokee	3,336	3,571	Horry	14,255	14,085	Saluda	767	765
Chester	2,413	2,599	Jasper	1,001	975	Spartanburg	14,278	14,606
Chesterfield	2,640	2,834	Kershaw	2,914	3,147	Sumter	5,210	5,224
Clarendon	2,006	1,893	Lancaster	4,534	4,802	Union	1,942	2,020
Colleton	2,398	2,198	Laurens	3,356	3,543	Williamsburg	2,306	2,166
						York	16,557	18,997

## Unemployment Rates by Workforce Investment Areas (WIAs) September 2011



<b>Catawba WIA</b> <a href="http://www.catawbacog.org">www.catawbacog.org</a>	14.7%
<b>Greenville WIA</b> <a href="http://www.greenvillewib.com">www.greenvillewib.com</a>	8.4%
<b>Lowcountry WIA</b> <a href="http://www.lowcountryworkforce.org">www.lowcountryworkforce.org</a>	10.1%
<b>Lower Savannah WIA</b> <a href="http://www.lswia.org">www.lswia.org</a>	12.5%
<b>Midlands WIA</b> <a href="http://www.midlandsworkforce.org">www.midlandsworkforce.org</a>	9.1%
<b>Pee Dee WIA</b> <a href="http://www.peedeewib.org">www.peedeewib.org</a>	13.5%
<b>Santee-Lynches WIA</b> <a href="http://www.slworkforcedev.org">www.slworkforcedev.org</a>	11.7%
<b>Trident WIA</b> <a href="http://www.toscc.org">www.toscc.org</a>	9.0%
<b>Upper Savannah WIA</b> <a href="http://www.us1stops.com">www.us1stops.com</a>	10.9%
<b>Upstate WIA</b> <a href="http://www.upstatawib.org">www.upstatawib.org</a>	11.4%
<b>Waccamaw WIA</b> <a href="http://www.wrcog.org">www.wrcog.org</a>	10.9%
<b>Worklink WIA</b> <a href="http://www.worklinkweb.com">www.worklinkweb.com</a>	9.7%

## Unemployment Rates by Metropolitan Statistical Areas (MSAs) September 2011



<b>Anderson MSA</b>	9.9%
<b>Charleston-North Charleston-Summerville MSA</b>	9.0%
<b>Columbia MSA</b>	9.2%
<b>Florence MSA</b>	11.5%
<b>Greenville MSA</b>	8.7%
<b>Myrtle Beach-North Myrtle Beach-Conway MSA</b>	10.5%
<b>Spartanburg MSA</b>	10.6%
<b>Sumter MSA</b>	11.5%